

# FURNITURE LIFTS

## Europe moves house with Teupen furniture lifts

### The advantages

- Fast and safe.  
Reduction of downtime thanks to split-second lifting and telescoping of the rails as well as the quick conveyance of goods.
- Maximum profitability for your company.  
By safe, outdoor transport, merchandise and property are protected from damage. This reduces your insurance costs.
- Save personnel costs with one-man operation.  
When loading as well as transporting, only one person is usually needed.
- Lifting height 20 – 53 m and loading capacity up to 400 kg.  
For every need, the proper piece of equipment.
- Easy to operate via truck drive.  
Optional sound-proofed Honda engine.
- Many transport possibilities.  
With "thinking steering" and a high quality, multi-functional turntable with collapsible side panels, continuous rotation and extendable into the building, you have a great variety of options.
- Hydraulic outriggers as standard.  
Individually operated outriggers quickly enable the machine to be positioned.
- "Fuzzy B" control gives extra outrigger safety.  
Particularly useful in rental giving the operator more safety.



Change system



Truck-mounted e. g. on Mercedes Sprinter



Truck-mounted e. g. on a Ford



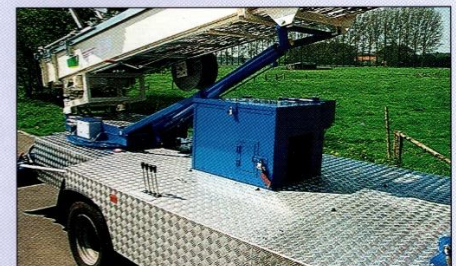
Glass work



Adjustable turntable height (crank)



Big furniture turntable (ca. 4 m² area)



Super-sound-proofed Honda motor,  
13 or 19 horsepower



Lever steering



Fuzzy regulator without spring cable reel  
and limit switch, with radio control unit

**TEUPEN**<sup>®</sup>  
...work safely aloft

B. Teupen  
Maschinenbau GmbH  
Marie-Curie-Straße 13  
48599 Gronau/Germany  
☎ +49(0)2562/8161-0  
☎ +49(0)2562/8161-888  
[www.teupen.info](http://www.teupen.info)  
[mail@teupen.info](mailto:mail@teupen.info)



# 26 VH/LM 300

## Technical Data



### Furniture Hoist **TEUPEN transpoLIFT**

### 26 VH/LM 300

Art.-No.: 1260-0900

Extensibility of guiderails (min. - max.):	6,80 m - 26 m
Tilt angle of guiderails (from - to):	app. 20 ° - 87 °
Guiderails (from - to):	7 - 3
Height of bottom rails:	333 mm
Loading height (min.):	app. 0,80 m
Extension rope:	double telescoping wire
Sled wheel width:	0,64 m
Sled travel on rollers:	automatically adjusting
Setting up:	hydraulic
Hoisting speed (max.):	app. 50 m/min
Tractive force of winch (max.):	app. 4000 N
Load capacity (max.):	300 kg
Slewing positioning lock:	15 locking positions

### Furniture platform measurements (L x B x H)

• closed:	0,9 m x 1,5 m x 0,6 m
• open:	1,8 m x 2,7 m
Platform alignment range:	20° - 90°
Adjustability of platform:	app. 840 mm
Platform rotation:	endless (4 x lockable)

### Outriggers (4 x hydraulic)

Area (middle plate):	see sketch
Plate diameter:	160 mm
Self-adjusting plate:	2 x 15°

### Technical Data (in transport position) of machine mounted on MB Sprinter 308/310/312

Length:	app. 6,85 m
Width:	app. 1,91 m
Height:	app. 3,00 m (3,20 m)
Weight of m. c.:	app. 1650 kg
Total weight:	3,5 t
Wheel base:	3,55 m

### Motor

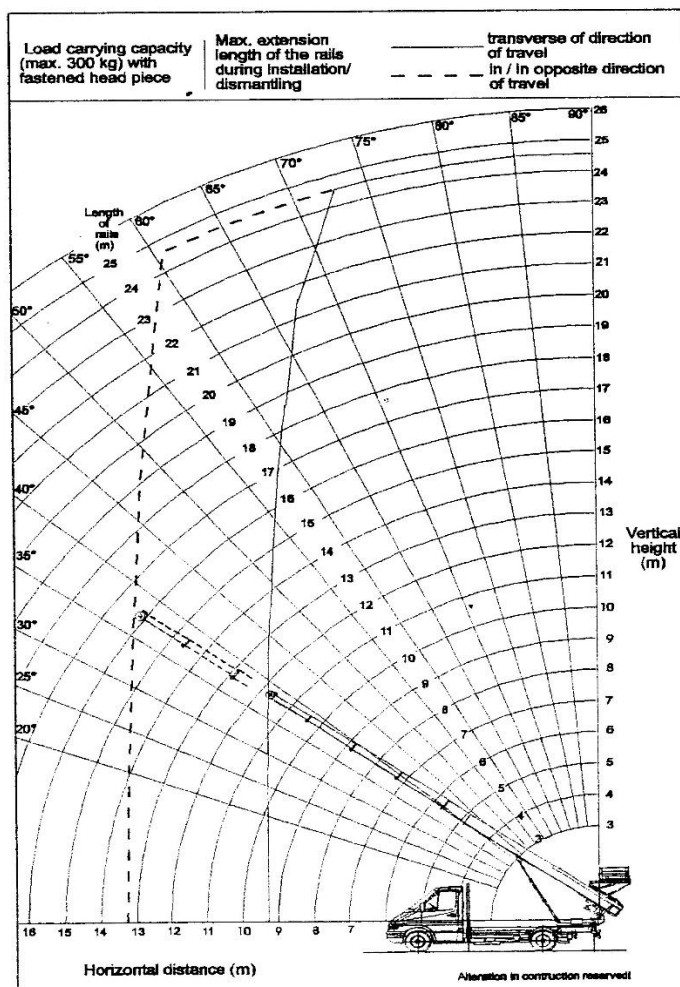
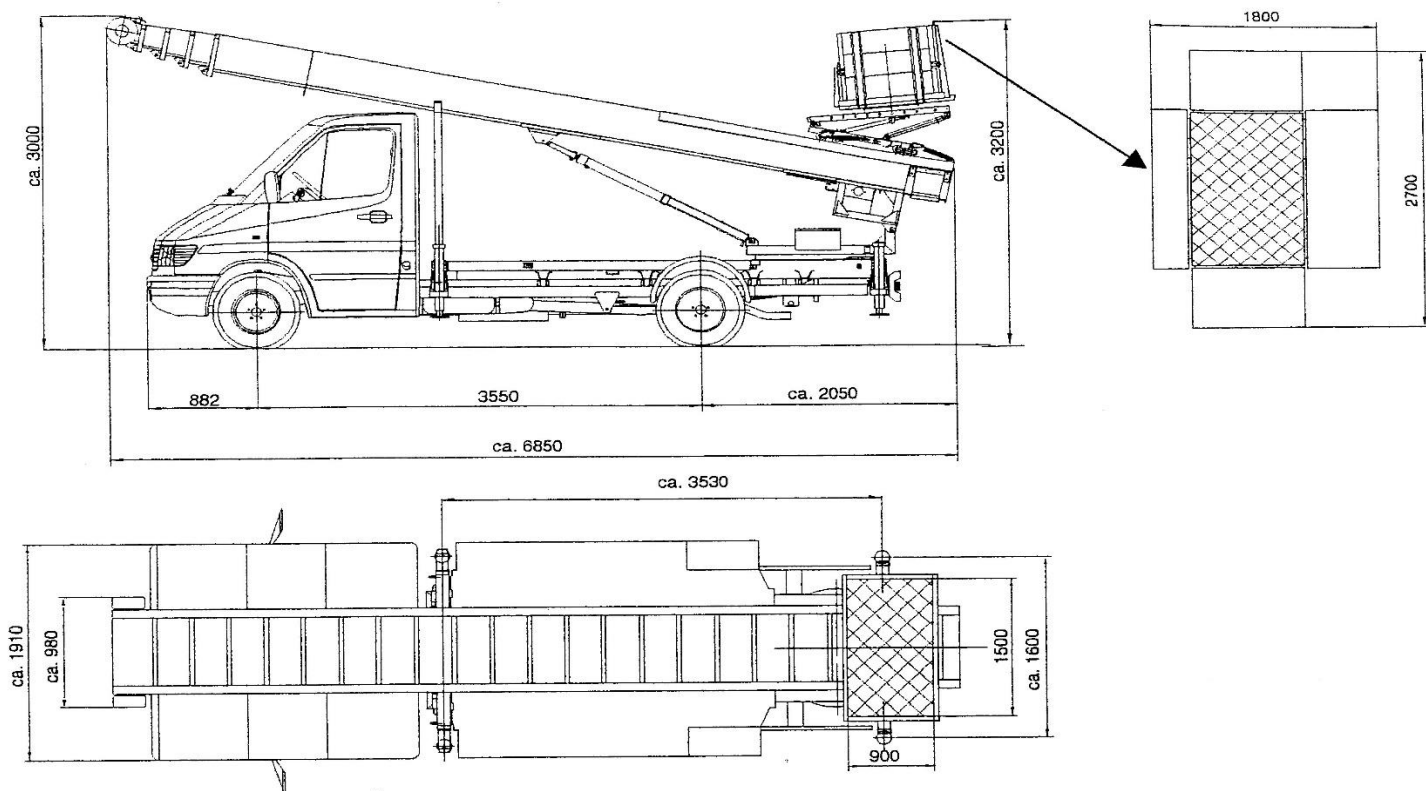
MB 308:	58 kW - 4 - cyl. - Dieselmotor
MB 310:	75 kW - 5 - cyl. - Dieselmotor
MB 312:	90 kW - 5 - cyl. - Dieselmotor

### Hydraulics

Gear-wheel-pump driven by truck	
Hydraulic-pump oil usage:	33 L / 1000 min <sup>-1</sup>

### Options

Truck specifications for mounting m. c.:	contact Teupen
Fuzzy-control (see info):	basic equipment
Fuzzy-control (see info):	fuller basic equipment



Alteration in construction reserved!

## TEUPEN Maschinenbaugesellschaft mbH

Address: Marie-Curie-Strasse 13 - 48599 Gronau-GERMANY - Phone ++49 / 2562 / 8161-0 - Fax ++49 / 2562 / 8161-888  
 P. O. Box: 1951 - 48580 Gronau-GERMANY Internet: <http://www.teupen.info> - E-mail: [mail@teupen.info](mailto:mail@teupen.info)